



LAUREN PELLEGRINI

LIGHTING DESIGNER, SCENIC ARTIST/CARPENTER



PRESENTED BY: SCAD APO
DIRECTOR: JORDAN YOWELL
PHOTOS COURTESY OF: FINN OZAETA

LITTLE SHOP OF HORRORS

LIGHTING DESIGN



PRESENTED BY: SCHOOL OF THE HOLY CHILD
DIRECTOR: KIMBERLY CALHOUN
TECHNICAL DIRECTOR: ZACHARY DORE



ADDITIONAL DUTIES INCLUDED:
- FOUNDATIONAL AND DETAIL CARPENTRY
- SCENIC PAINTING
- SET DRESSING
- PROP CONSIDERATIONS FOR MULTIPLE CASTS



BEAUTY AND THE BEAST

GENERAL CARPENTER



PRESENTED BY: WHITE PLAINS PERFORMING ARTS CENTER
DIRECTOR: FRANK PORTANOVA
LIGHTING DESIGN: JAMIE RODERICK
TECHNICAL DIRECTOR: ZACHARY DORE
PHOTOS COURTESY OF: CHRISTOPHER SWADER, JUSTIN SWADER,
KATHLEEN DAVISSON

- DUTIES INCLUDED:
- STRUCTURE CARPENTRY
 - DETAIL WORK (FRAMING, MOULDING)
 - LARGE SCALE VACUFORM APPLICATION



IN THE HEIGHTS

GENERAL CARPENTER/SCENIC ARTIST



PRESENTED BY: PORT CHESTER COUNCIL FOR THE ARTS
DIRECTOR: JULIE COLANGELO DORE
TECHNICAL DIRECTOR: ZACHARY DORE
PHOTOS COURTESY OF: MARGARET SCULTI

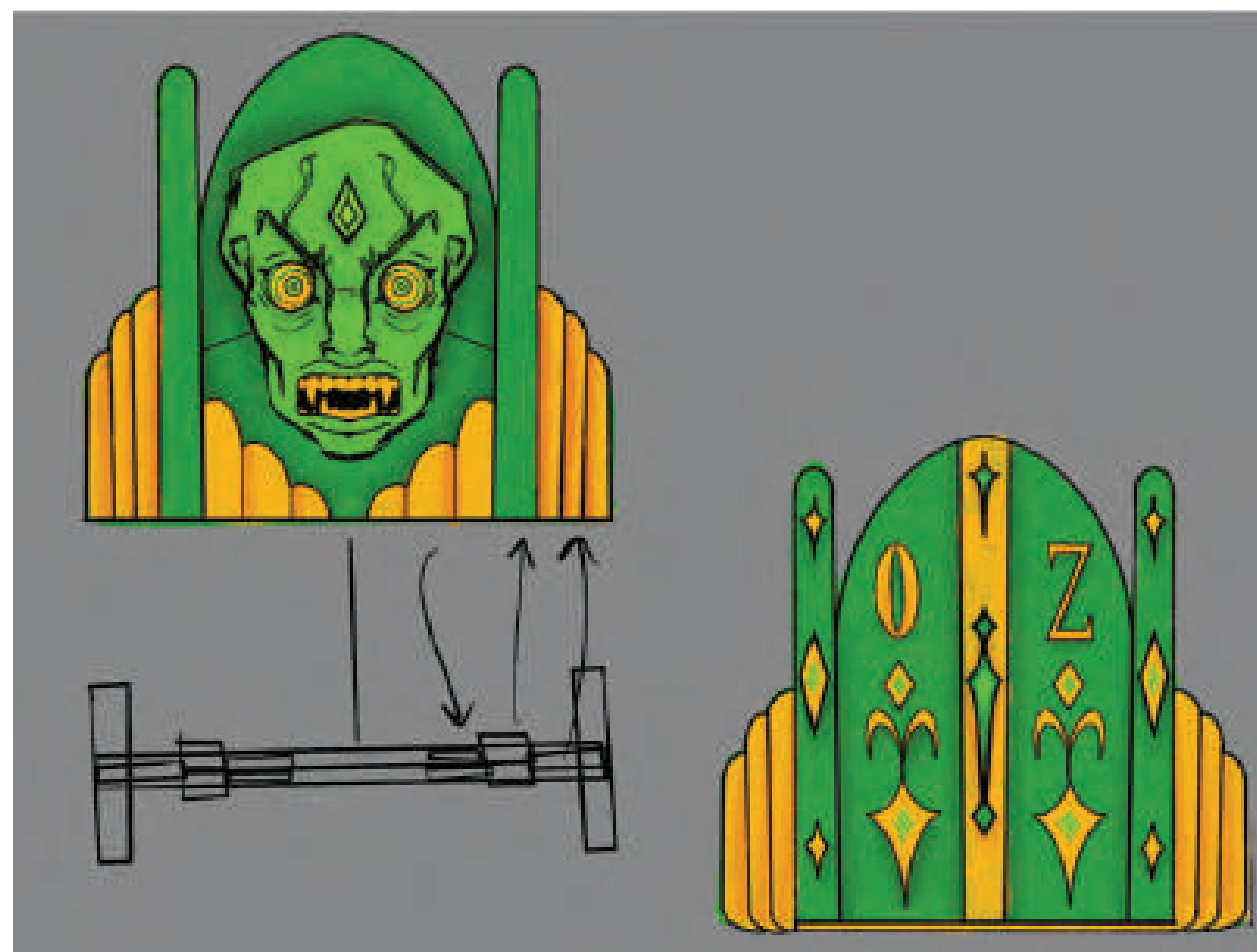


- DUTIES INCLUDED:
- STRUCTURE CARPENTRY
 - SCENIC PAINTING
 - SET DRESSING
 - WELDING FOR CONSTRUCTION OF FUNCTIONAL GARAGES





PRESENTED BY: WESTCHESTER SANDBOX THEATER
DIRECTOR: JASON SUMMERS

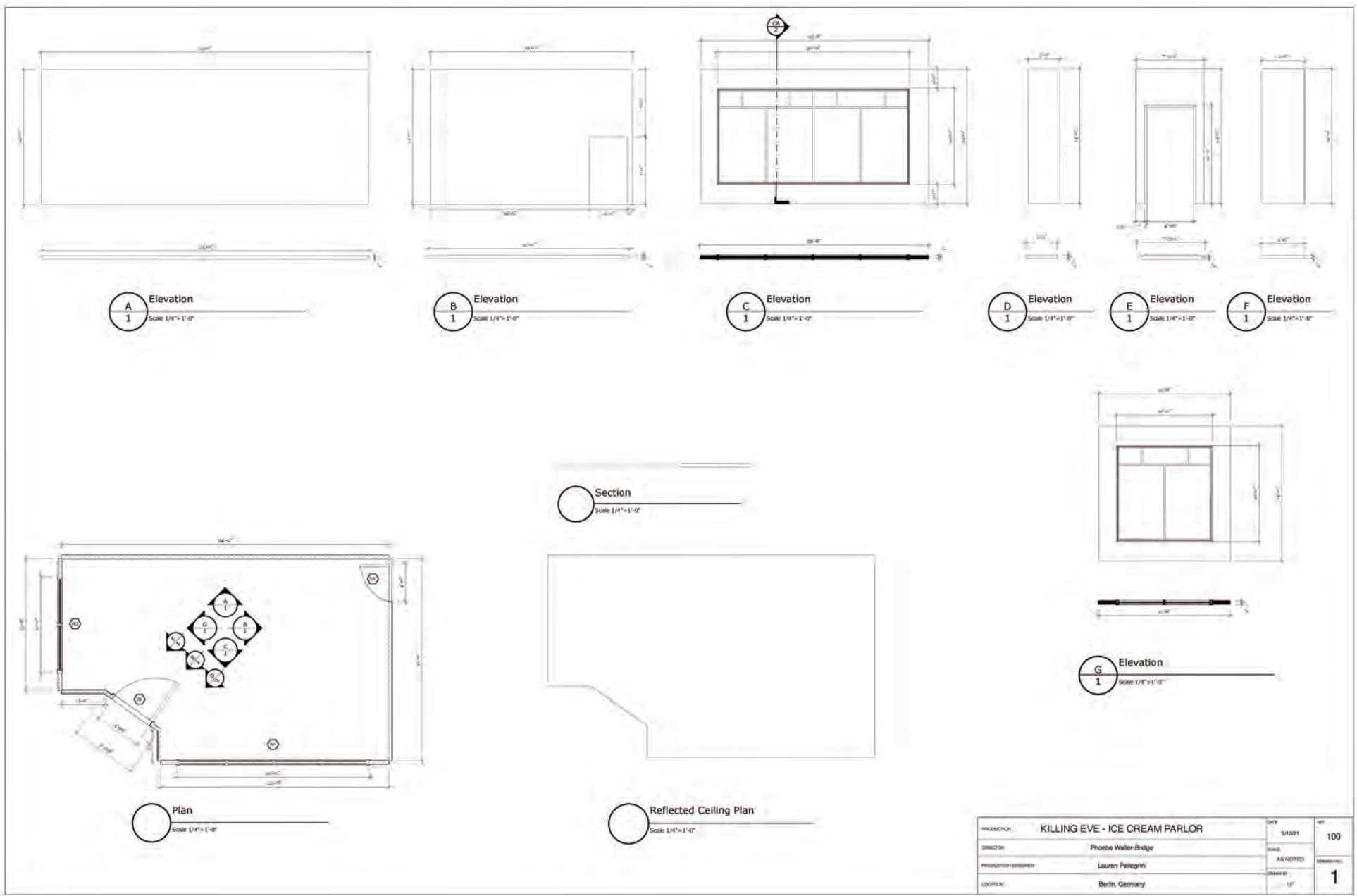
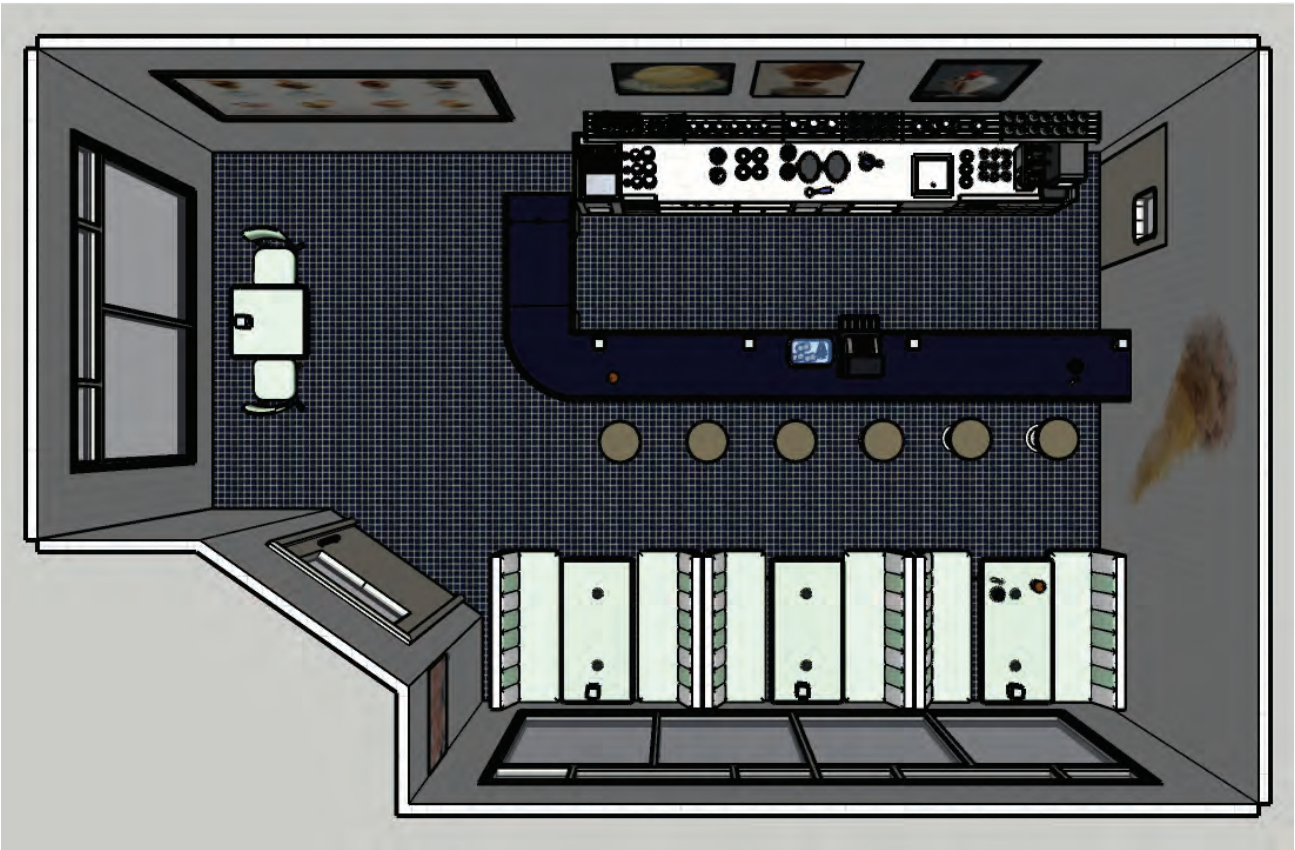
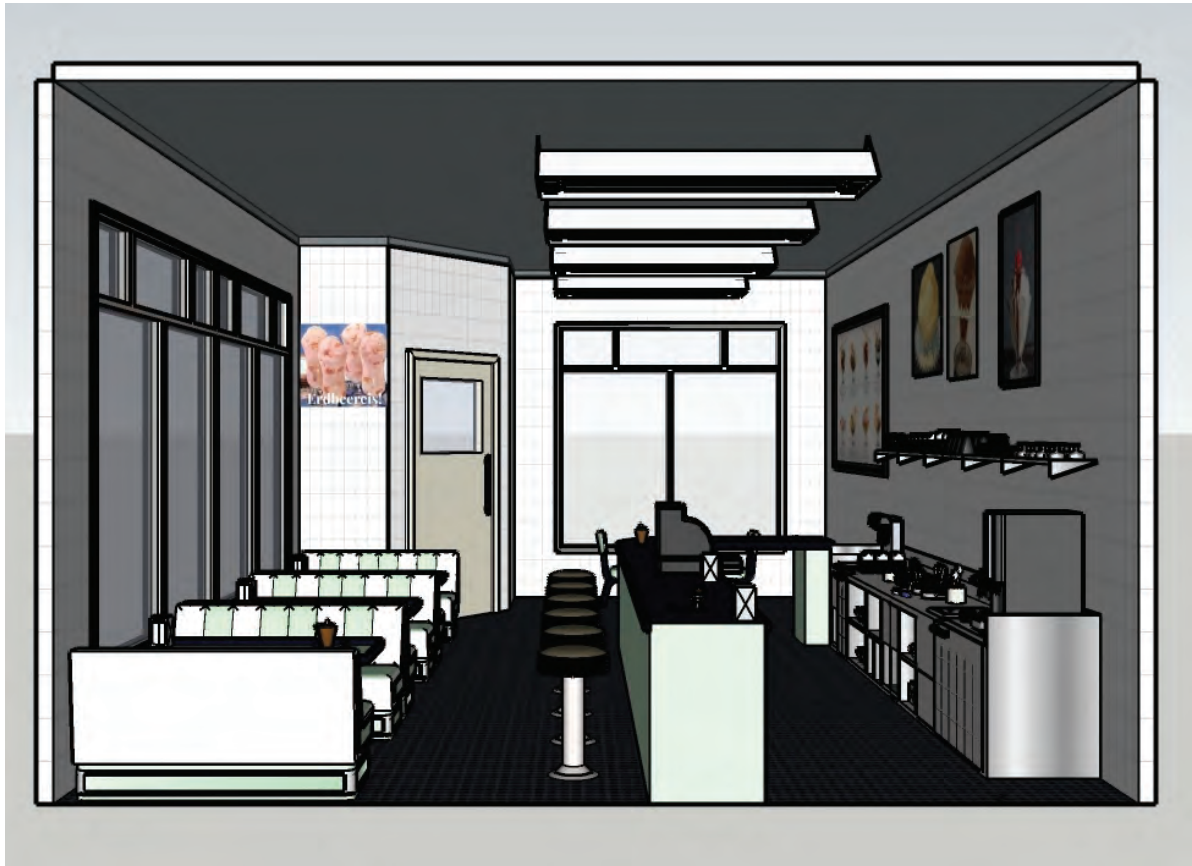


INITIAL CONCEPT DRAWING (DONE IN PROCREATE)

CONCEPT - ASSISTANT LIGHTING DESIGN



VECTORWORKS 3D DRAFTING AND RENDERING



HANNIBAL (NBC) MASK REPLICA

PROP CONSTRUCTION



WILL GRAHAM'S BITE MASK
AS SEEN IN HANNIBAL (NBC) SEASON 2 EPISODE 5: MUKOZUKE



THANK YOU!